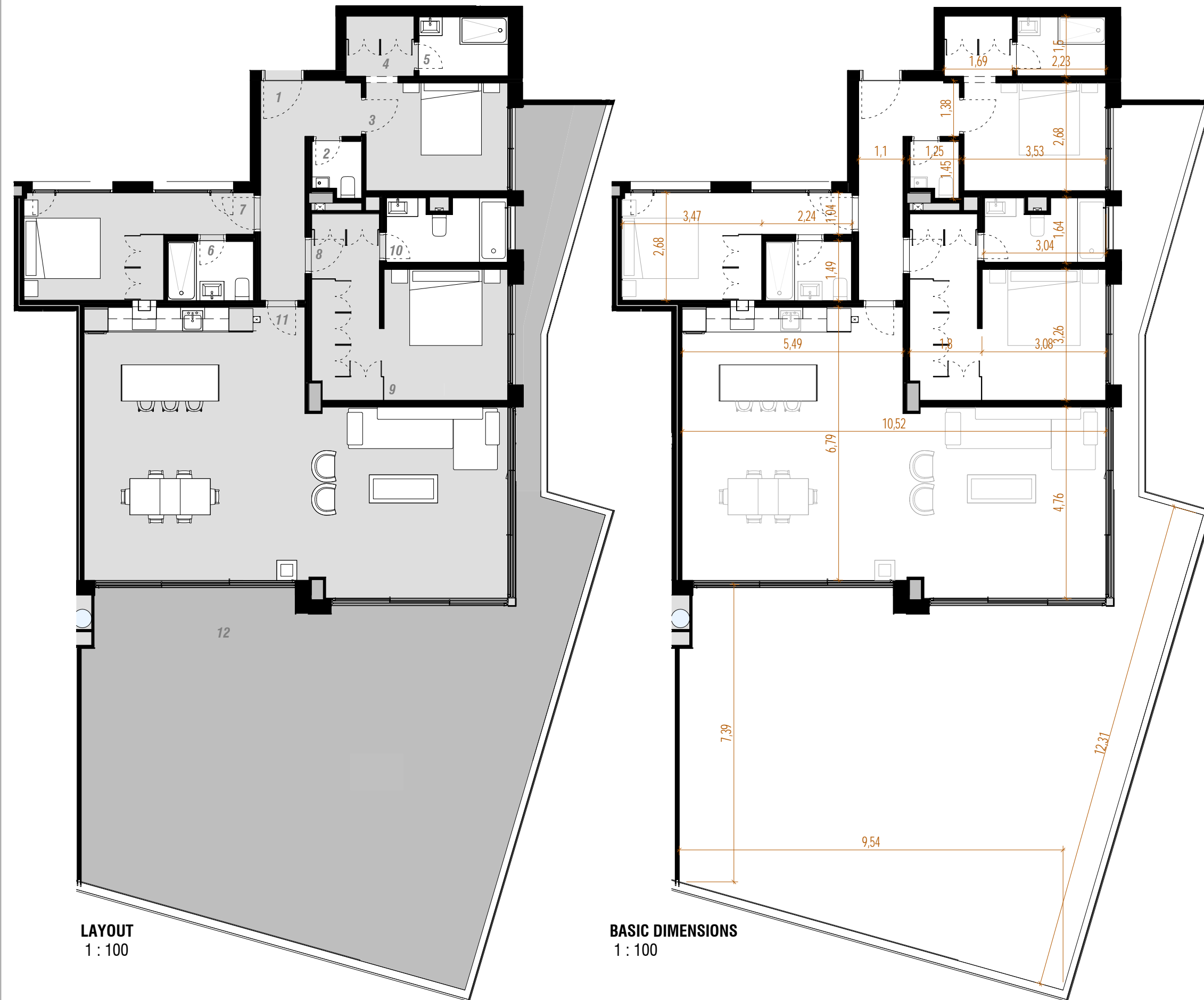


# ARENAGO'S GARDENS



APARTMENT LOCATION. THIRD FLOOR

### APARTMENT 308 - Room&areas

| Number | Name                    | Area                  |
|--------|-------------------------|-----------------------|
| 1      | Hall                    | 7,91 m <sup>2</sup>   |
| 2      | Toilet                  | 1,55 m <sup>2</sup>   |
| 3      | Bedroom 01              | 9,41 m <sup>2</sup>   |
| 4      | Dressing 01             | 1,53 m <sup>2</sup>   |
| 5      | Bathroom 01             | 3,20 m <sup>2</sup>   |
| 6      | Bathroom 02             | 3,09 m <sup>2</sup>   |
| 7      | Bedroom 02              | 10,61 m <sup>2</sup>  |
| 8      | Dressing 03             | 4,83 m <sup>2</sup>   |
| 9      | Bedroom 03              | 9,99 m <sup>2</sup>   |
| 10     | Bathroom 03             | 4,52 m <sup>2</sup>   |
| 11     | Kitchen&Living&Din<br>g | 60,76 m <sup>2</sup>  |
| 12     | Terrace                 | 109,34 m <sup>2</sup> |

### APARTMENT 308 - Gross area

| Number           | Name      | Area                  |
|------------------|-----------|-----------------------|
| 308              | Apartment | 146,92 m <sup>2</sup> |
| 308              | Terrace   | 101,05 m <sup>2</sup> |
| 308              | Terrace   | 8,89 m <sup>2</sup>   |
| TOTAL GROSS AREA |           | 256,86 m <sup>2</sup> |

### APARTMENT 308 - Net areas

| Living  | L03 | 130,86 m <sup>2</sup> |
|---------|-----|-----------------------|
| Terrace | L03 | 109,34 m <sup>2</sup> |

LAYOUT  
1 : 100

BASIC DIMENSIONS  
1 : 100

Note:  
Net area does not include wardrobes.  
The final layout may differ from the plan due to construction aspects.  
Dimensions are indicative.